

:A-Sign

SAV PR POLY 80 WTLPT

Material description

Soft cadmium-free polymeric calendered PVC film.

Color: white.

Surface: translucent.

Adhesive

Solvent-based pressure-sensitive acrylic glue.

Glue: permanent.

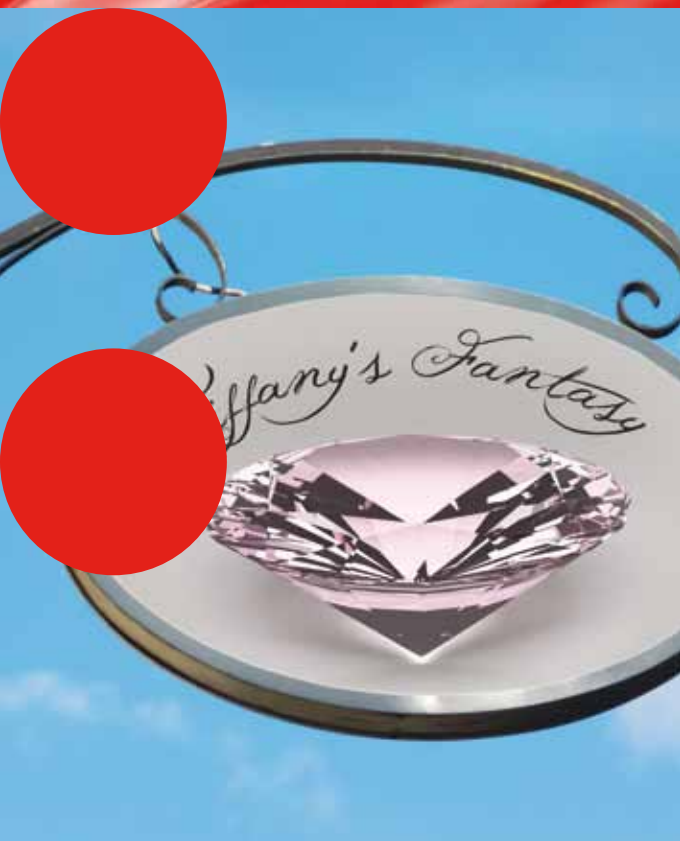
Color of glue: transparent.

Applications

The film is perfectly suited for all illuminated advertising on non-corrugated surfaces, and can be used for numerous applications, such as on light boxes and also on most flexible sign faces.

Backing paper

White PE-coated paper: 130 gr/m²



A-Sign

SAV PR POLY 80 WTLPT

Product specifications

Technical properties at a relative humidity of 50 ± 5 % and a temperature of $23 \pm 2^\circ\text{C}$.

	Test method	Result
Thickness		
Thickness film	Din53370	80 micron
Thickness film + glue + backing paper	Din53370	220 micron
Elongation at break		
In production length direction	Din53455	> 130 %
In cross direction	Din53455	> 150 %
Dimensional stability		
	Finat 14	< 0.40 mm
Adhesion strength		
After 20 minutes	Finat 1	15 N/25mm
After 24 hours	Finat 1	18 N/25mm
Amount of light passing through		
	-	12,4%
Expected outdoor life span		
	-	4 years
Temperature range		
At application	-	+10°C to +40°C
At use	-	-20°C to +70°C
Flammability		
If applied on aluminium, glass, steel = self-extinguishing		

Storage instructions

This material has to be stored in its original packing and with the original protection flanges (and preferably vertically).

In order to avoid any loss of quality, the material should also be stored in suitable conditions, that is at a temperature between 10 and 20°C, and a relative humidity of 50 %. Under these conditions, it can be stored for a period of two years.

Additional information

Should you require more information, please contact your local representative.

The statements in this information sheet are based upon our knowledge and practical experience. This data sheet is intended only as a source of information and is given without guarantee and does not constitute a warranty. Due to the wide variety of possible uses and applications customers should independently determine the suitability of this material for their specific purpose, prior to use.

Notes

Large amounts of solvent ink on the material can activate the ink on the backside of the material. If the material is enrolled too quickly after printing, the print on the backside of the material may become visible in your printout. Therefore we advise you to limit the amount of ink and to leave the prints to dry sufficiently before enrolling them.

Surfaces to which the material will be applied must be thoroughly cleaned from dust, grease or any contamination which could affect the adhesion of the material.

When printing on solvent and low-volatile solvent media, the temperature settings of the printer are extremely important. We advise a pre-heater temperature between 35°C and 45°C and an after-heater (dryer) temperature that is about 5°C to 10°C higher. In general, we can say the temperature of both heaters should be set as high as possible, on condition that the material stays completely flat. Too high a temperature can lead to an inferior print quality and to color differences.